

Opengear console servers are designed to interact with the Server Technology Sentry™ Switched PDU's and provide remote power management and reboot both In-Band and Out-of-Band from one simple interface. Opengear console servers have evolved into the "best of breed" power management solution with leading edge technology in infrastructure management.

Systems administrators now have one window to manage all their IT, power and environmental infrastructure no matter where it is located or how it is connected. Opengear console servers control the widest selection PDU and UPS devices and provide power metering at the managed device level with outlet control. No other vendor logs and alarms on temp readings from such a spectrum of sources in the data center. We do this all in band or out of band while retaining affordability.



- Access via Internet
- Dial in Out of Band
- Automatic Failover



### Integrated Hotkey function to power cycle from Telnet/SSH Session

#### Centralized Power Management

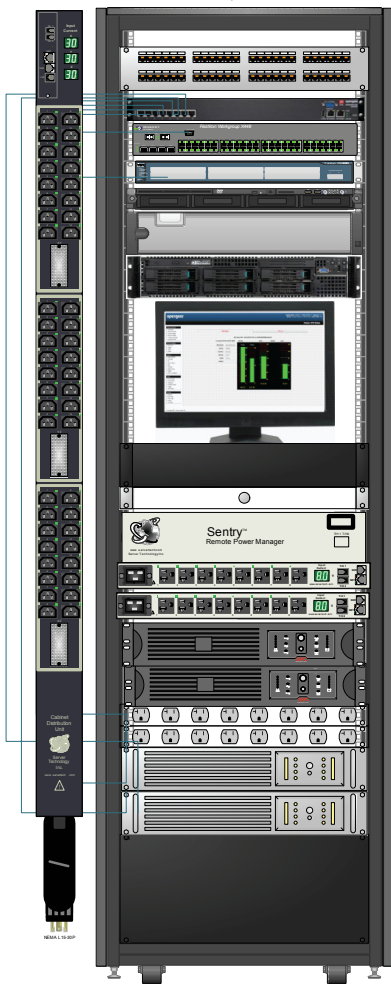
- 100% Compatible with Server Technology® PDU's
- Serial, USB and Network/SNMP for UPS and PDU connectivity
- Simple Web Interface - Logging, Alerting, Monitoring, Real Time Graphing
- Drop in solution - Manage multiple vendor's equipment at existing installs

#### IT Infrastructure Management

- Manage servers, switches, routers, firewalls, SAN with serial console ports
- Access blade servers via IPMI or lights out cards over secure management LAN
- Provide network separation and IP address handling for management LAN
- Programmable Linux for easy scripting, perfect for Cloud and Grid computing

#### Environmental Monitoring

- Manage Environmental Sensors from a single appliance and web console
- Logging, alerts and graphing for disaster recovery and audit trail
- Manage temperature, humidity, door contacts, water, smoke, vibration
- 100% compatible with third party environmental sensors



Supported Server Technology® PDU's

Switched

- \* Switched CDU CW-2H IPM-2
- \* Switched CDU CW-8H
- \* Switched CDU CW-16V
- \* Switched CDU CW-16V-MX
- \* Switched CDU CW-24V
- \* Switched CDU CW-24V(C13-C19)
- \* Switched CDU CW-24VD/VY-3Ph
- \* Switched CDU CW-24VD/VY(C13-C19)-3Ph
- \* Switched CDU CW-24VY(C13-C19)-3Ph
- \* Switched CDU CW-24V4-3Ph
- \* Switched CDU CW-24V4(C13-C19)-3Ph
- \* Switched CDU CW-32VD
- \* Switched CDU CW-48VD/VY-3Ph
- \* Sentry PT22
- \* Dual-Feed PTXL/PTXM-HD16
- \* Power Tower XL - Power Tower XM

Smart

- \* 3 Phase Modular Power Distribution
- \* Smart CDU CS-12HD
- \* Smart CDU CS-12HDD/HDY-3Ph
- \* Smart CDU CS-12VD/VY-3Ph
- \* Smart CDU CS-16V
- \* Smart CDU CS-16V-MX
- \* Smart CDU CS-18VD/VY-3Ph
- \* Smart CDU CS-21VD/VY-3Ph
- \* Smart CDU CS-24V
- \* Smart CDU CS-24V (C13/C19)
- \* Smart CDU CS-24VD/VY-3Ph
- \* Smart CDU CS-24VD/VY (C13/C19)-3Ph
- \* Smart CDU CS-24V4-3Ph
- \* Smart CDU CS-24V4 (C13/C19)-3Ph
- \* Smart CDU CS-3AVY-3Ph
- \* Smart CDU CS-36VD/VY-3Ph
- \* Smart CDU CS-48VD
- \* Smart CDU CS-48VDD/VDY-3Ph
- \* Smart CDU CS-54VDY-3Ph
- \* Smart CDU CS-84VD
- \* Smart CDU CS-84VDD/VDY-3Ph

Metered Power

- \* Metered CDU C-4H
- \* Metered CDU C-10H
- \* Metered CDU C-12H
- \* Metered CDU C-12HD
- \* Metered CDU C-12HDD/HDY-3Ph
- \* Metered CDU C-12V
- \* Metered CDU C-21VD/VY-3Ph
- \* Metered CDU C-24H
- \* Metered CDU C-24V
- \* Metered CDU C-24VD
- \* Metered CDU C-24VD/VY-3Ph
- \* Metered CDU C-24VD/VY (C13/C19)-3Ph
- \* Metered CDU C-48VD
- \* Metered CDU C-48VDY-3Ph
- \* PTPD-H008

-48 VDC Power Management

- \* Sentry 4805-XLS-16
- \* Sentry 4805/35-XLS-12
- \* Sentry 4820-XLS-8
- \* Sentry 4870-XLS-4
- \* Sentry 4835-XLS-4
- \* PDU400

Fail-Safe Power Redundancy

- \* Fail-Safe PTXL/PTXM-HF16

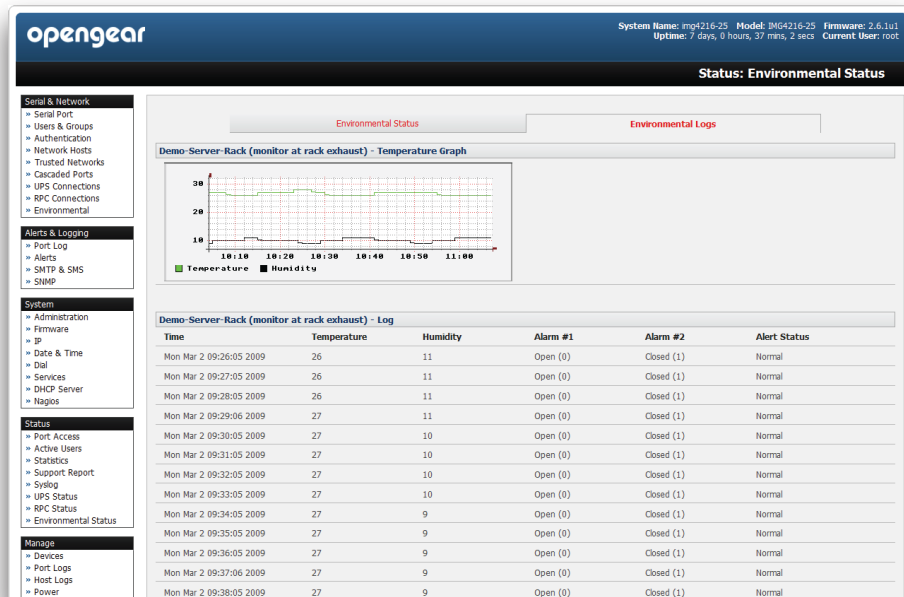
How it works:

The power management in Opengear's console servers is built on Network UPS Tools, an extremely powerful and versatile collection of programs for monitoring and administering UPS hardware. The open source Network UPS Tools project is sponsored by Eaton (PowerWare/MGE) and it now also supports Power Distribution Units (PDU) management, either natively using SNMP or through a binding to Powerman. Opengear's Console Servers also embed the PowerMan programs from Livermore Labs, which control serial and network connected PDUs. Both these trusted open source solutions are extensively deployed in major enterprise data centers around the world.

Simple Browser or Terminal Interface



Real Time Graphing, Logs and Alerting



opengear Power Management is included with:

**CM4100**  
Console Server

**IM4200**  
Infrastructure Manager

**IMG4000**  
Management Gateway

**KCS6000**  
KVM Console Server