

# Sentry Power Manager™ (SPM)

## Globally Monitor & Manage All Your Cabinet Power Distribution Units (CDUs) From a Central Interface

### What is SPM?

SPM is a 1U appliance and software package capable of monitoring and managing multiple Sentry CDU devices in IP-based enterprise networks. SPM brings your entire network of Smart and Switched CDUs to a central interface.



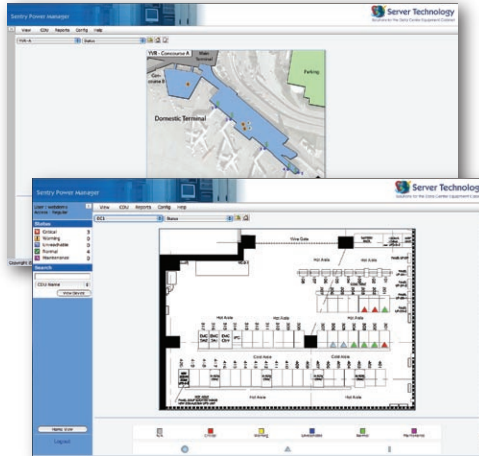
1U (Standard) SPM Appliance



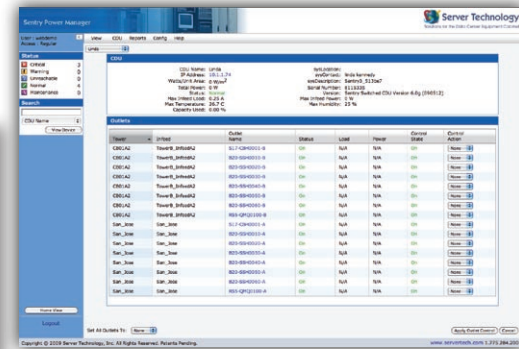
1U (Dual-Corded Redundant) SPM Appliance



Global View



User Uploaded Facility Maps



CDU Level View

### What solutions does SPM offer?

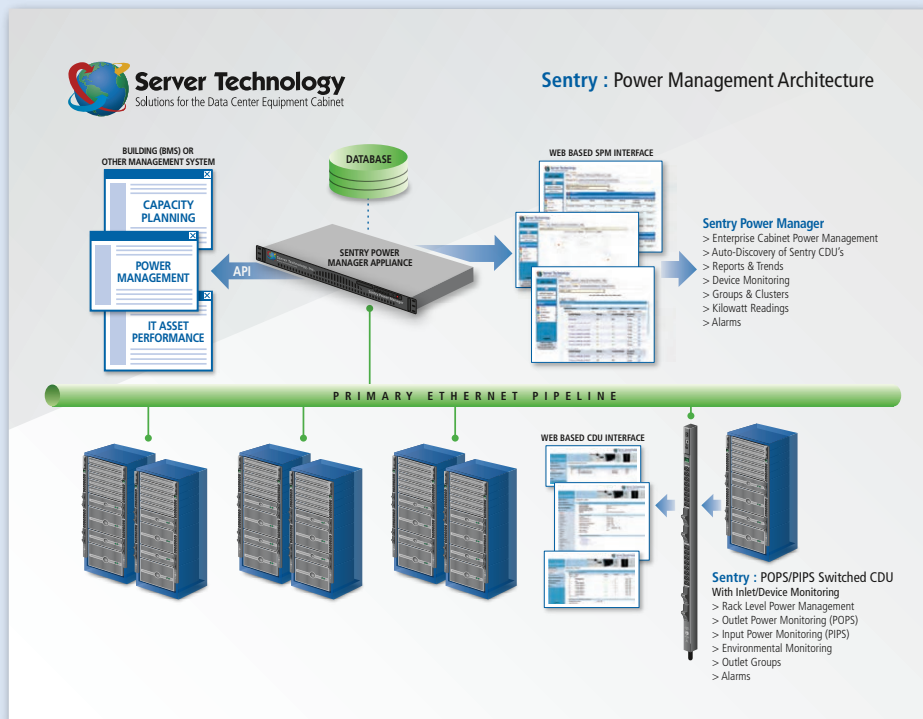
- > Do you have multiple CDUs in one or more locations that you would like to access from a single point?
- > Would you like the ability to see a centralized overview of power throughout your global network?
- > Would you like quick access to an alarming devices?
- > Do you need a tool monitor, report, and trend your aggregate power and environmental information across your entire network?
- > Are you looking to collect information that can be used to calculate your PUE for data center efficiency metrics?
- > Do you need the ability to export database information to your Building Management System (BMS)?
- > Do you have a large deployment of CDUs that require management of different access rights?
- > Do you need a fast and easy way to push firmware updates out to your individual CDUs?

### What is SPM Capable of?

- > SPM provides a global view of all Sentry CDUs with the ability to view devices based on their temperature, humidity, current and device status. Quickly drill down from global view to your facility maps to an individual CDU. From there, you have access to the features and functions of that CDU.
- > Manage and monitor all user-defined alarm conditions on your entire network.
- > Control and monitor individual device power on POPS (Per Outlet Power Sensing) CDUs.
- > Group and cluster outlets for remote reboot, power measurement information across a single CDU, a linked CDU, or across the entire network.

- > SPM stores all the power and environmental data retrieved by all your CDUs. SPM uses this information to provide reporting and trending information for display within SPM or integrated using an API with your existing Building Management System (BMS) or other system.
- > Allows measurement of power consumption and capacity planning.
- > Auto-discover all your CDUs connected to your IP network.
- > View Logs for user access, discovery, user actions, and alarms.
- > Multiple user levels and permissions including support for LDAP.
- > Control individual outlets on Switched CDUs.

## How does SPM work?



### Ease-of-Use:

- > Auto-discovers each CDU for easy configuration
- > Easily create a user interface that mirrors the physical deployment of the data center

### Multiple Reporting Options:

- > Reporting capabilities to produce reports on critical management parameters such as temperature, humidity, current load and energy consumption

### Trends/Graphs:

- > Period: 24-hours to 3 years
- > Create trends based on Temperature, Humidity, In-feed Load, In-feed Power, System Watts/unit area, and System Total Power
- > Up to 12 parameters can be shown on a single trend

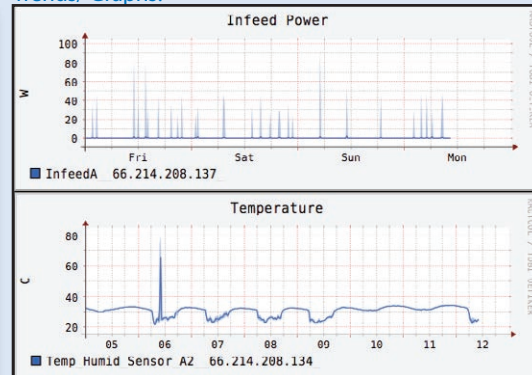
### Appliance Based Architecture:

- > Form Factor: 1U

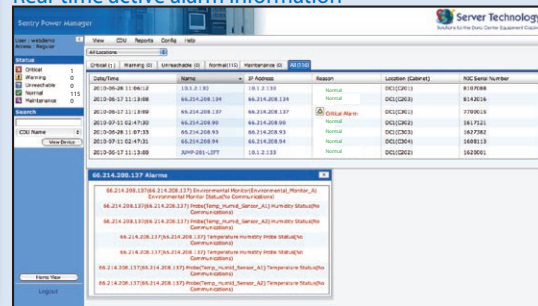
### Compatibility:

- > Server Technology Sentry CDUs with firmware 5.3x or later
- > Competitive PDUs (Contact Server Technology for more information)

### Trends/ Graphs:



### Real-time active alarm information



Alert	Severity	Message	Location (Cabinet)	Alert Number
Critical	1	Outlet Power Monitoring (POPS) - 66.214.208.134	DC1(C01)	8140116
Warning	0	Temperature Monitoring (Temp) - 66.214.208.134	DC1(C01)	8140116
Information	0	Humidity Monitoring (Humid) - 66.214.208.134	DC1(C01)	8140116
Normal	115	Power Factor Monitoring (PF) - 66.214.208.134	DC1(C01)	8140116
Maintenance	0	Power Factor Monitoring (PF) - 66.214.208.134	DC1(C01)	8140116

### On-Demand Accessibility:

- > Real-time view of all active system alarms
- > Manage thousands of CDUs from a single console

### Groups and Clusters:

- > Create Groups to Group outlets per device, groups of devices (application), or per cabinet
- > Create Clusters to group outlets across IP addresses (cabinets), rows of cabinets or the whole Data Center
- > Groups and Clusters can be used to reboot or power down a single device or a row of cabinets
- > Power information can be provided for billing per Group and Clusters such as kW and kW-h for a single device, groups of devices, a cabinet, rows of cabinets or the whole data center

### Web Browsers Supported:

- > Microsoft Internet Explorer 7.0 or later
- > Mozilla Firefox 2.0 or later

### API (Application Programming Interface):

- > Integrates power and environmental information into third party Software Systems, Building Management Systems or other Data Center Monitoring/Management Systems



## Server Technology

**HEADQUARTERS - NORTH AMERICA**  
 Server Technology, Inc.  
 1040 Sandhill Drive  
 Reno, NV 89521  
 United States  
 1.775.284.2000 Tel  
 1.775.284.2065 Fax  
 sales@servertech.com  
 www.servertech.com  
 www.servertechblog.com

**EMEA**  
 Server Technology Intl  
 Sienna Court  
 The Broadway  
 Maidenhead  
 Berkshire  
 SL6 1NJ  
 United Kingdom  
 +44 (0) 1628 509053 Tel  
 +44 (0) 1628 509100 Fax  
 salesintl@servertech.com

**APAC**  
 Server Technology Intl  
 37th Floor, Singapore Land Tower  
 50 Raffles Place  
 Singapore 048623  
 +65 (0) 6829 7008 Tel  
 +65 (0) 6234 4574 Fax  
 salesintl@servertech.com