

**One unbelievable solution for
rack-level data center power management.**



Sentry Power Manager



Server Technology

Solutions for the Data Center Equipment Cabinet

Sentry Power Manager.

The most comprehensive and affordable rack-level solution to measure, monitor and trend power and environmental information in your data center.

Unbelievable functionality and flexibility.

Unbelievably priced.

All the critical data you need to make informed decisions about your power efficiency.

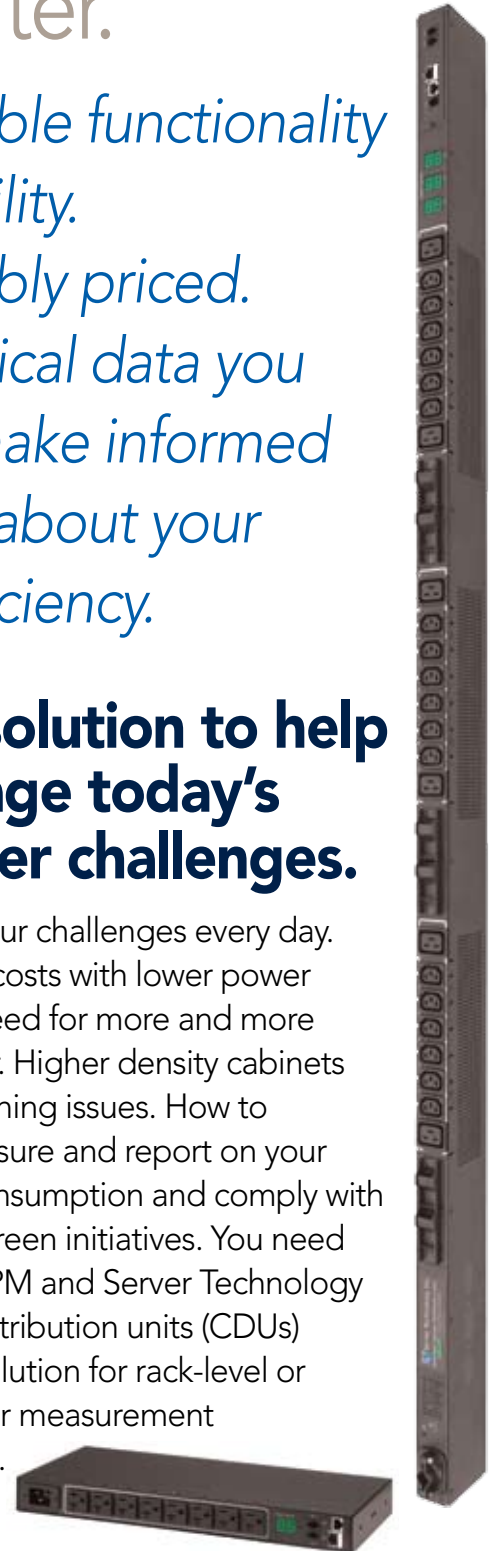
The one solution to help you manage today's data center challenges.

We hear about your challenges every day. Increased power costs with lower power availability. The need for more and more computing power. Higher density cabinets and capacity planning issues. How to continuously measure and report on your cabinet power consumption and comply with your company's green initiatives. You need help. You need SPM and Server Technology cabinet power distribution units (CDUs) – the complete solution for rack-level or device level power measurement and management.

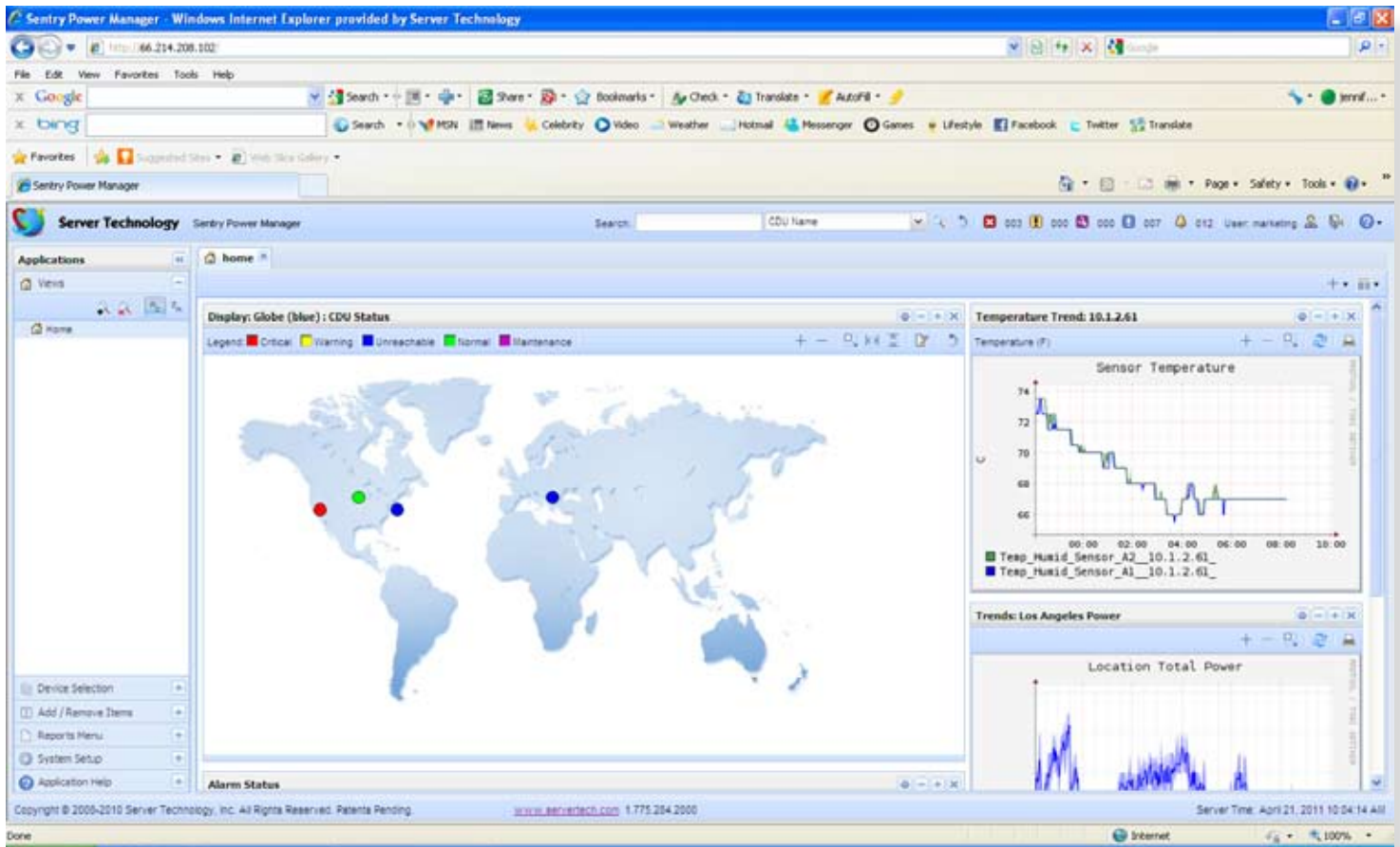


You're the CIO.

We'll give you topline reports of your data center's energy efficiency and data to create PUE and DCiE metrics to meet your green initiatives.



It's your rack-level data center command central.



You'll know and understand everything that's going on with your power with the data from your CDUs, collected and aggregated within SPM. SPM's new interface makes it easy to set up your own customizable network operations center (NOC) views. Customize your views to help you make key power management decisions. An overall view of each CDU, each cabinet, each

You're the Data Center Manager.

We'll give you the tools for measurement at the outlet, device, circuit, application, cabinet, zone or data center level.

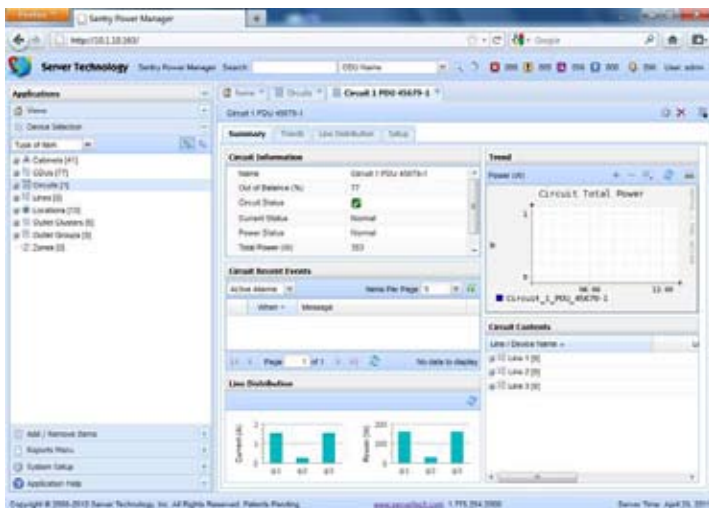


location. As much or as little as you want to see with intuitive drill-down menus, featuring new icon-based management functionality. NOC views have thirty-eight separate monitoring and management windows. Dedicated and consolidated information for cabinets, CDUs, Circuits, Lines, Locations, Outlet Clusters, Outlet Groups and Zones provides detailed information and configuration for each one of these parameters.

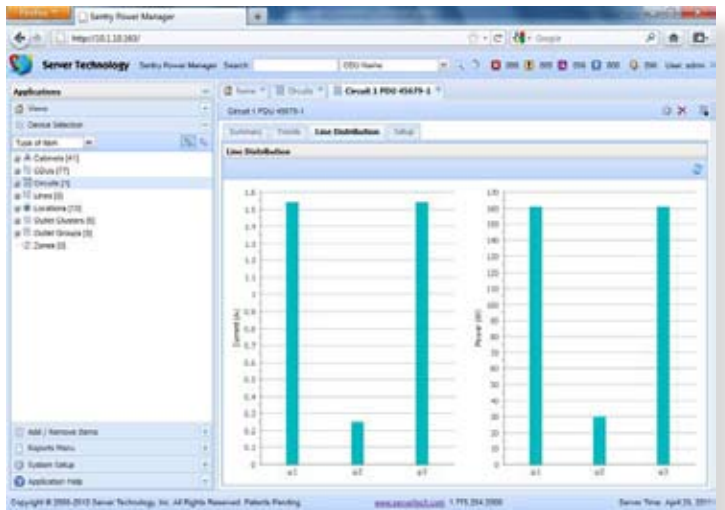
CDU: Information, Digital Temperature, Digital Humidity, Trends, Recent Events Outlet Associations, Environmental Sensors, Temperature Trend, Humidity Trend, Infeeds, Phase Distribution, Outlet Power and Outlet Control



Cabinet: Information, Cabinet contents, recent events and trends



Locations: Graphical map display, Information, Recent events and trends



Outlet groups: Contents, Recent Events, Trends, Outlet Power and Outlet Control

Outlet Cluster: Contents, Recent events, trends, outlet power and outlet control

System Alarm Status Zone: Contents, Recent events, Trends



Innovative new features and functionality

Create and save reports. Schedule reports and send automatically via email. Generate system reports and trends and email to a defined list of recipients. Schedule outlet actions, device discovery email reports and trends, backup, outlet group and clusters and database maintenance.

Circuit & Line Management: Balance your 3-phase lines. Map out and manage the physical infrastructure of your power systems feeding one or many cabinets, each with one or many Server Technology CDUs. You'll see information, contents, recent events and trends.

Intelligent Data Grid Management: Our exclusive Intelligent Data Filtering Technology allows you to show specific amounts of information and manage large blocks of data with the ability to sort, group and export complex data instantly.

Enhanced Search: Search on anything to get what you need. CDU name, environmental monitor name, sensor name, contact closure name, infeed or outlet name, cabinet, location – you name it. The system also lets you have multiple search results open and worked concurrently. Hot links within the search allow you to choose your device or group fast.

Automatic firmware upgrades: Autodiscover new CDUs. SPM automatically upgrades the firmware on the CDUs when a new version is released and it autodiscovers any new CDUs that you implement.



You're the Facilities Director.

We'll show you where you can reduce data center expenses and how to monitor and remotely manage your CDUs from a central location.

You're the IT Manager.

We'll give you the power and temperature monitoring to allow you to locate stranded capacity, identify "hot spots" and compute metrics like PUE and DCiE.



What you need. At a glance.

A single point to access all of your CDUs.

- Monitoring of competitive CDUs from APC, Geist, Raritan and others
- Global views of your entire data center floor and CDUs
- Manage thousands of CDUs from a single console
- Secure web based access, anytime, anywhere

Central location for alarms.

- Tracking of active alarms and alarm history
- Logs for Discovery, User Actions and Logins
- Manage and command multiple CDUs at once, or select individual units to direct
- Real time view of active system alarms
- You know at a glance which cabinet and which CDU has an issue

Reports and Trends.

- Create and save Reports and Trends
- Benchmark power consumption from a device, CDU, Cabinet, Zone or the whole data center floor. Know where you are today to help decide where you want to be tomorrow.
- Turn SPM data into business reports to solve power usage problems, understand how and where your power is being consumed and prove consumption reduction plans
- Produce reports on the critical management parameters you want – temperature, humidity, current load and energy consumption.

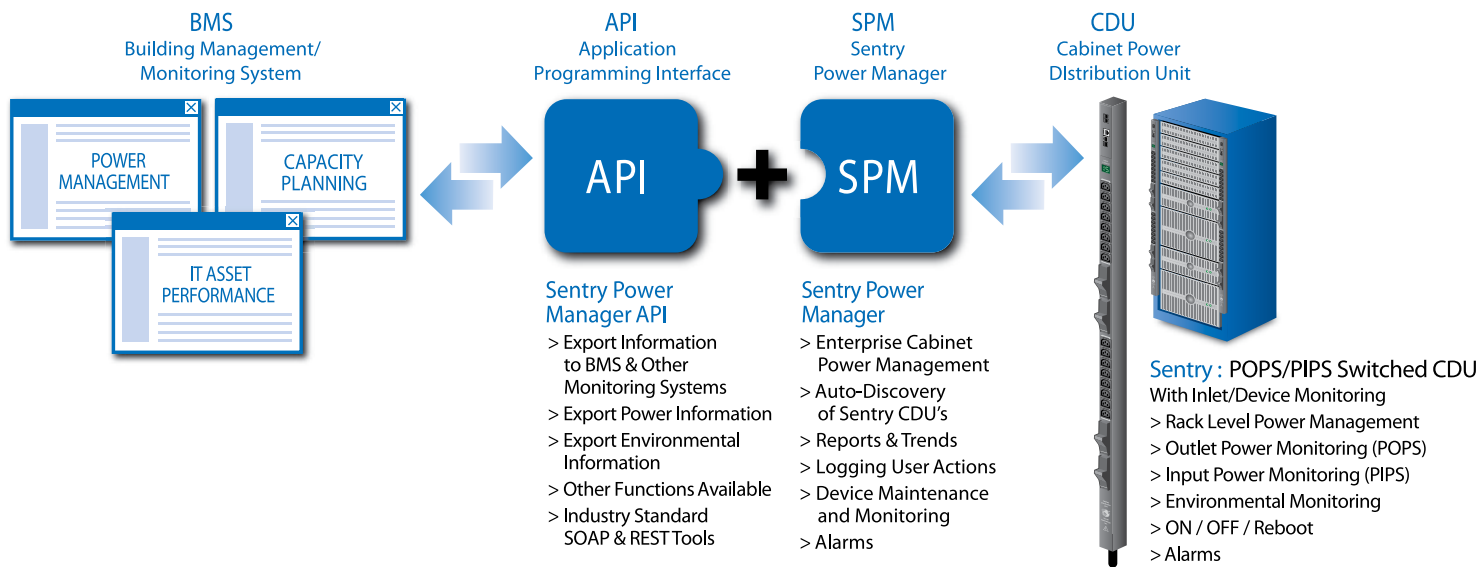
- Produce current and power reports on power consumption of each input, total for the rack and/or per square foot (meters) of the rack. Power information includes kW and kW-hour for cost allocation and power monitoring
- Control and security. Logs all user activity.

Spot problems faster. Improve uptime. Make your life simpler.

A single pane of glass view to manage your entire CDU network. Email alerts, SNMP trap forwarding and alarms. Measure, monitor and trend your power, temperature and humidity. Your entire CDU network. Globally.

"Sentry Power Manager doesn't just tell you that a cabinet has a problem; it gets out a map and shows you where the problem is."

- Marty Sems, Processor



Middleware or stand-alone flexibility.

SPM provides the best of both worlds. *SPM can serve as a middleware solution with your Building Management System (BMS) or other Data Center Monitoring software package.* When used this way, SPM provides power and environmental information via a well-documented Application Programming Interface (API) for a "single pane of glass" view. SPM's API is based on industry standard Simple Object Access Protocol (SOAP) and Representational State Transfer (REST) XML-based tools which allow SPM to communicate to third party systems. *SPM can be a stand-alone operation and information solution, for power and CDU device management including setup, configuration, firmware upgrades and other functions.*

API Key Features:

- Communicates power and environmental information to existing software systems
- The API allows a "single pane of glass" view in your central system while also providing one location to monitor and manage all of your CDUs.



Designed by the experts.

SPM was created by our dedicated team of engineers that know their way around a data center. Our new "Online Help" functionality gives you the technical support and information for any questions that arise.

The world's top companies rely on SPM.

With over 250 installations around the world today, SPM gives the top healthcare, financial, search, computer and university customers the tools they need to measure, manage and trend their power.

Find more information, visit www.servertech.com today.



Server Technology

Solutions for the Data Center Equipment Cabinet

Headquarters - North America

Server Technology, Inc.

1040 Sandhill Drive

Reno, NV 89521

United States

(1) 800 835 1515 Toll Free

(1) 775 284 2000 Tel

(1) 775 284 2065 Fax

sales@servertech.com

www.servertech.com

www.servertechblog.com

EMEA

Server Technology Intl.

+44 (0) 1628 509053 Tel

+44 (0) 1628 509100 Fax

salesintl@servertech.com

APAC

Server Technology, Inc.

+65 (0) 9739 0396 Tel

+00 (1) 6234 4574 Fax

salesintl@servertech.com