

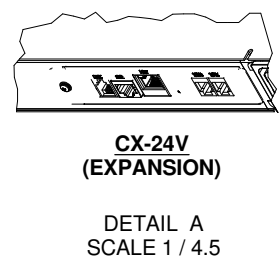
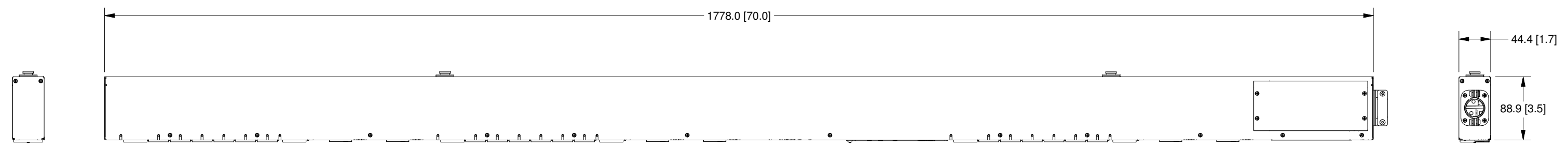
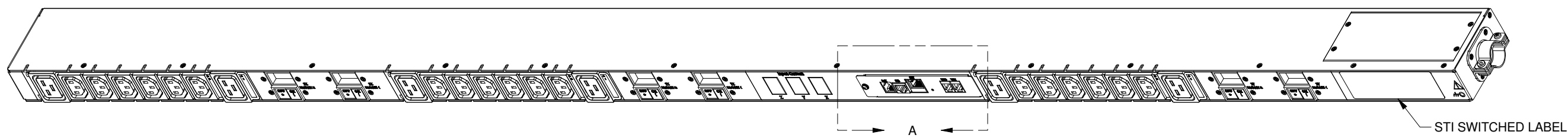
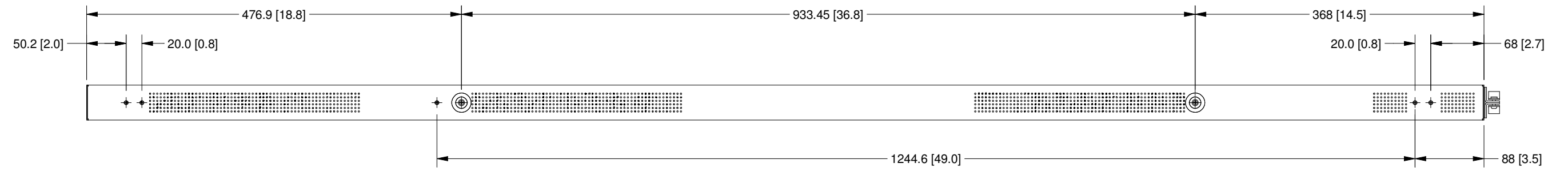
SERVER TECHNOLOGY, INC
 PROPRIETARY INFORMATION

THIS DOCUMENT IS THE SOLE PROPERTY OF SERVER TECHNOLOGY, INC. THE RELEASE OF DATA CONTAINED IN THIS DOCUMENT AND THE REPRODUCTION OF THIS DOCUMENT, IN WHOLE OR IN PART, WITHOUT THE WRITTEN PERMISSION OF SERVER TECHNOLOGY, INC IS PROHIBITED.

RoHS COMPLIANT

REVISION HISTORY				
ZONE	REV	DESCRIPTION	DATE	APPROVED
-		INITIAL DESIGN	11/17/08	MAR/

- NOTES:
1. DIMENSIONS ARE IN MILLIMETERS AND [] BRACKETS ARE IN INCHES.
 2. DIMENSIONS ARE NOMINAL. INFORMATION SUBJECT TO CHANGE WITHOUT NOTICE.



UNLESS OTHERWISE SPECIFIED
 * INTERPRET DRAWING IAW ASME Y14.100-2000
 * DIMENSIONING & TOLERANCING IAW ASME Y14.5M-1994
 * REMOVE ALL BURRS AND SHARP EDGES .2 R MAX
 * DIMENSIONS ARE IN MILLIMETERS
 * TOLERANCES ARE: DECIMALS ± .3 ANGLES ± 1.0°
 DO NOT SCALE DRAWING

MATERIAL:

FINISH:

VENDOR PART NO:

THIRD ANGLE PROJECTION

APPROVALS	DATE
DRAWN BY: mramsey	11/17/2008
CHECKED BY:	
APPROVED BY:	
RELEASED BY:	

SERVER TECHNOLOGY, INC.

1040 Sandhill Drive Reno, NV 89521

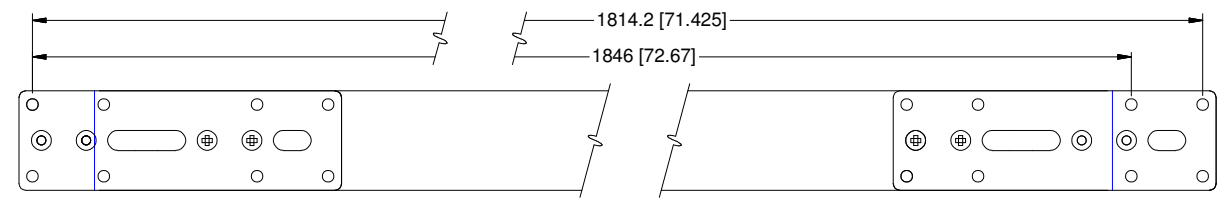
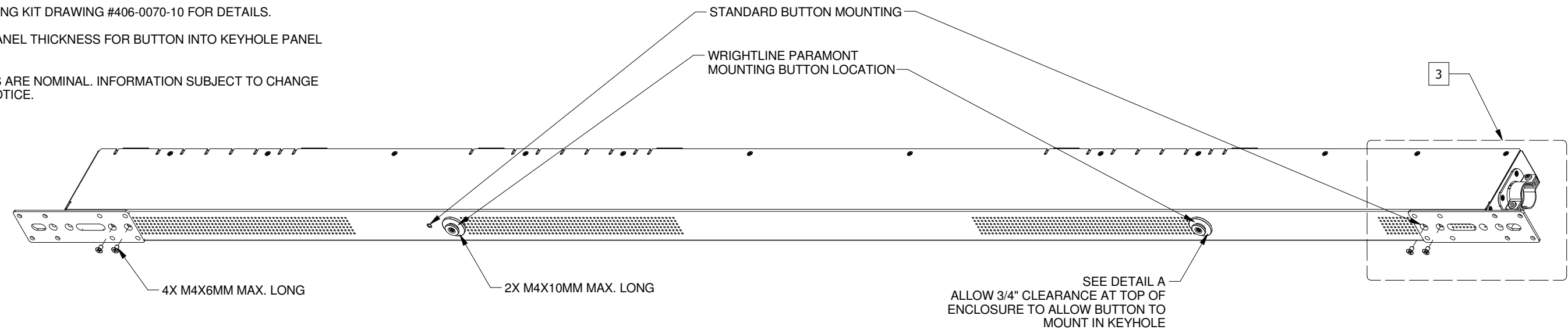
DRAWING TITLE:
OUTLINE DRAWING, CDU CX/CW-24Vx MODELS, w/ MOUNTING BRACKET OPTIONS

SIZE D	CAGE CODE 04V90	DWG NO. 412-0372-3	REV
SCALE: NONE	FILE NO: 412-0372-3.idw	SHEET	1 OF 3

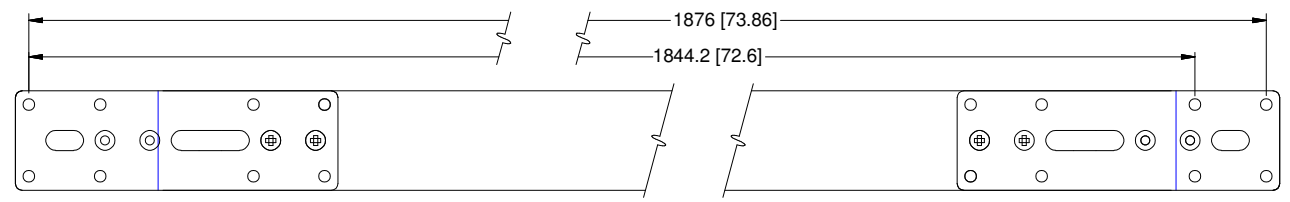
SERVER TECHNOLOGY, INC
 PROPRIETARY INFORMATION
 THIS DOCUMENT IS THE SOLE PROPERTY OF SERVER TECHNOLOGY, INC. THE RELEASE OF DATA CONTAINED IN THIS DOCUMENT AND THE REPRODUCTION OF THIS DOCUMENT, IN WHOLE OR IN PART, WITHOUT THE WRITTEN PERMISSION OF SERVER TECHNOLOGY, INC IS PROHIBITED.

RoHS COMPLIANT

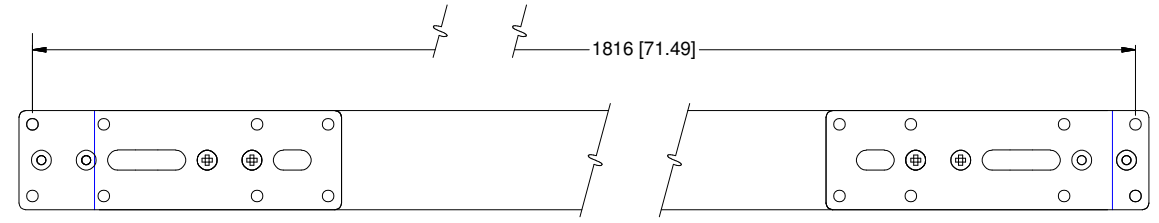
- NOTES:
1. DIMENSIONS ARE IN MILLIMETERS AND [] BRACKETS ARE IN INCHES.
 2. MOUNTING BRACKETS CAN BE MOUNTED IN SEVERAL DIFFERENT POSITIONS SEE FIG. A, B, C AND D.
 3. SEE MOUNTING KIT DRAWING #406-0070-10 FOR DETAILS.
 4. MAXIMUM PANEL THICKNESS FOR BUTTON INTO KEYHOLE PANEL IS 2.3MM.
 5. DIMENSIONS ARE NOMINAL. INFORMATION SUBJECT TO CHANGE WITHOUT NOTICE.



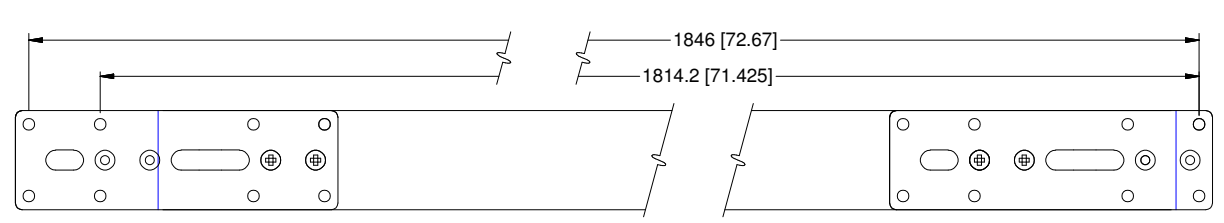
2 FIG. A
 MB-0005-IPT7



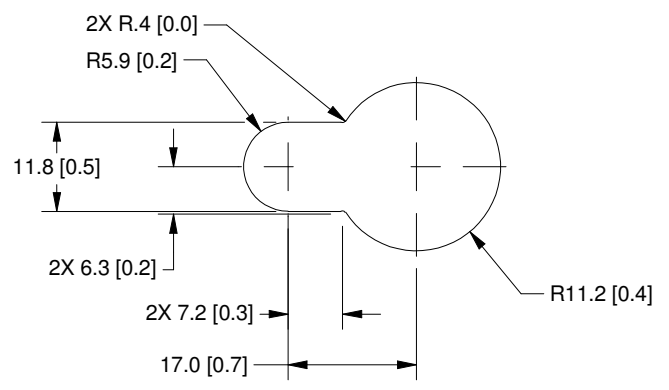
2 FIG. A
 MB-0005-IPT7



2 FIG. A
 MB-0005-IPT7



2 FIG. A
 MB-0005-IPT7



DETAIL A

UNLESS OTHERWISE SPECIFIED
 * INTERPRET DRAWING IAW ASME Y14.100-2000
 * DIMENSIONING & TOLERANCING IAW ASME Y14.5M-1994
 * REMOVE ALL BURRS AND SHARP EDGES .2 R MAX
 * DIMENSIONS ARE IN MILLIMETERS
 * TOLERANCES ARE: DECIMALS ± .3 ANGLES ± 1.0'
 DO NOT SCALE DRAWING

MATERIAL:
 FINISH:
 VENDOR PART NO:

THIRD ANGLE PROJECTION

APPROVALS	DATE
DRAWN BY: mramsey	11/17/2008
CHECKED BY:	
APPROVED BY:	
RELEASED BY:	

SERVER TECHNOLOGY, INC.
 1040 Sandhill Drive Reno, NV 89521

DRAWING TITLE:
**OUTLINE DRAWING, CDU CX/CW-24Vx
 MODELS, w/ MOUNTING BRACKET
 OPTIONS**

SIZE D	CAGE CODE 04V90	DWG NO. 412-0372-3	REV
SCALE: NONE	FILE NO: 412-0372-3.idw	SHEET	2 OF 3

8 7 6 5 4 3 2 1

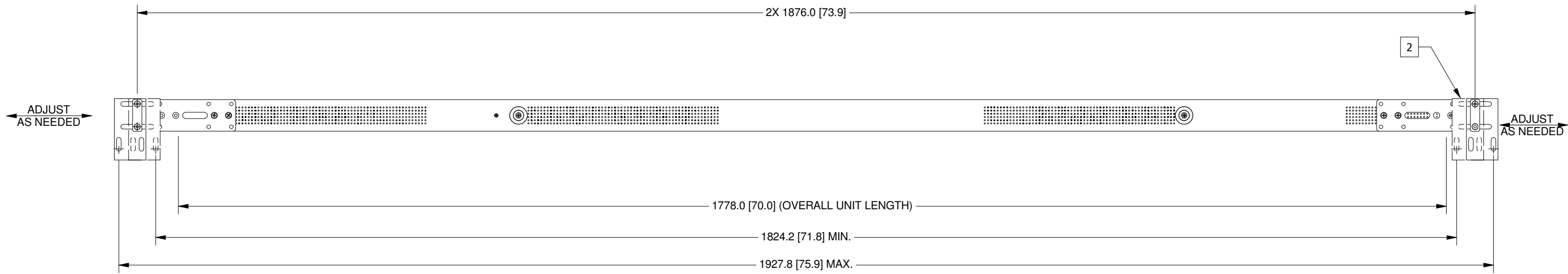
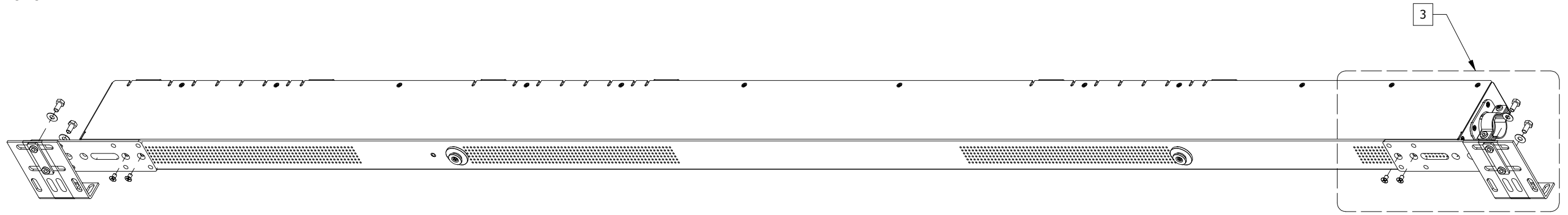
SERVER TECHNOLOGY, INC
 PROPRIETARY INFORMATION

RoHS COMPLIANT

THIS DOCUMENT IS THE SOLE PROPERTY OF SERVER TECHNOLOGY, INC. THE RELEASE OF DATA CONTAINED IN THIS DOCUMENT AND THE REPRODUCTION OF THIS DOCUMENT, IN WHOLE OR IN PART, WITHOUT THE WRITTEN PERMISSION OF SERVER TECHNOLOGY, INC IS PROHIBITED.

NOTES:

1. DIMENSIONS ARE IN MILLIMETERS AND [] BRACKETS ARE IN INCHES.
2. HIDDEN BRACKETS SHOWN ARE DIFFERENT OPTIONS FOR MOUNTING.
3. SEE MOUNTING KIT DRAWING #406-0070-7 FOR DETAILS.
4. DIMENSIONS ARE NOMINAL. INFORMATION SUBJECT TO CHANGE WITHOUT NOTICE.



UNLESS OTHERWISE SPECIFIED * INTERPRET DRAWING IAW ASME Y14.100-2000 * DIMENSIONING & TOLERANCING IAW ASME Y14.5M-1994 * REMOVE ALL BURRS AND SHARP EDGES .2 R MAX * DIMENSIONS ARE IN MILLIMETERS * TOLERANCES ARE: DECIMALS ± .3 ANGLES ± 1.0' DO NOT SCALE DRAWING		THIRD ANGLE PROJECTION 	
MATERIAL:		APPROVALS	DATE
FINISH:		DRAWN BY: mramsey	11/17/2008
VENDOR PART NO:		CHECKED BY:	
		APPROVED BY:	
		RELEASED BY:	

SERVER TECHNOLOGY, INC.

1040 Sandhill Drive Reno, NV 89521

DRAWING TITLE:
**OUTLINE DRAWING, CDU CX/CW-24Vx
 MODELS, w/ MOUNTING BRACKET
 OPTIONS**

SIZE D	CAGE CODE 04V90	DWG NO. 412-0372-3	REV
SCALE: NONE		FILE NO: 412-0372-3.idw	SHEET 3 OF 3

8 7 6 5 4 3 2 1